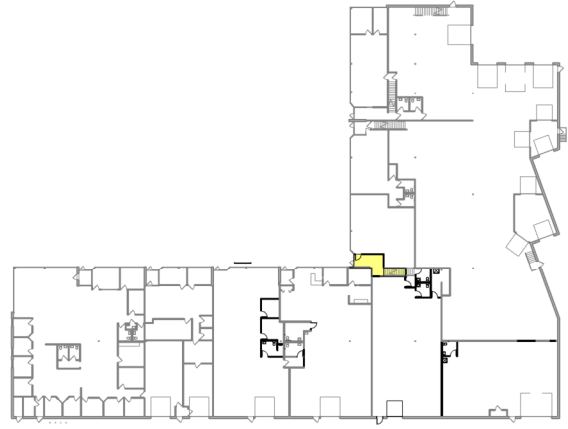
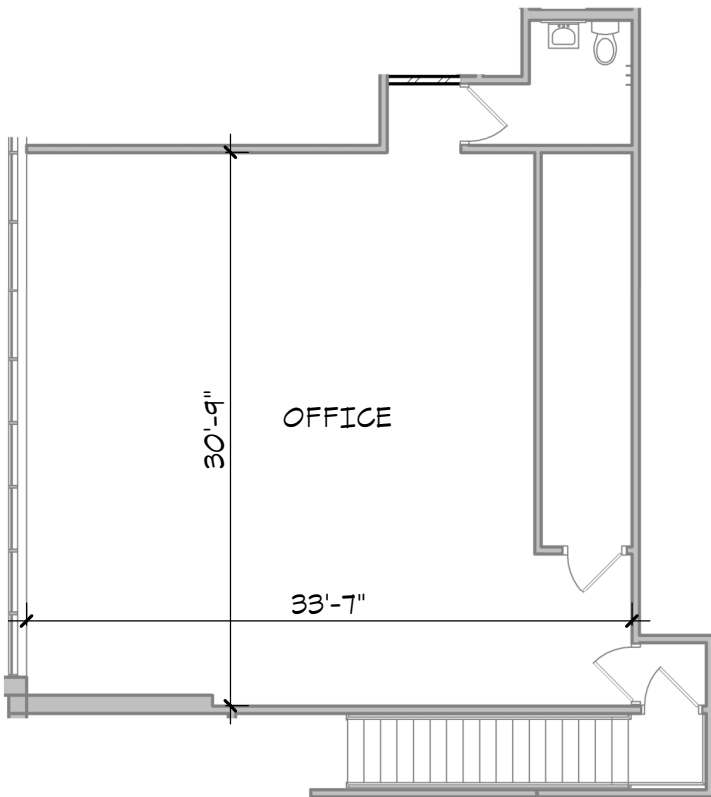


**3**  
**57B** **KEY PLAN**  
1" = 100'-0"



**4**  
**57B** **SUITE 9057 KEY PLAN**  
1" = 100'-0"

SUITE 9057 - UPPER AREAS	
OFFICE (UPPER)	1,205 S.F.
VESTIBULE (50%)	72 S.F.
ENTRY (MAIN)	53 S.F.
<b>TOTAL</b>	<b>1,330 S.F.</b>



**1**  
**57B** **UPPER PLAN** 1,205 R.S.F.  
3/32" = 1'-0"

**2**  
**57B** **SUITE 9057 PLAN** 125 R.S.F.  
3/32" = 1'-0"

SHEET:  
**57B**

PROJECT #: 191129  
DATE: 10/23/20

**LYNDALE BUSINESS CENTER**  
9051 LYNDALE BLVD.  
BLOOMINGTON, MN

**KENDALL**  
**COMMERCIAL**  
Tel: 952.884.4888 Fax: 952.881.4885

9300 Hennepin Town Road  
Minneapolis, MN 55347  
Tel: 952.278.8880

**HTG**  
architects  
www.htg-architects.com