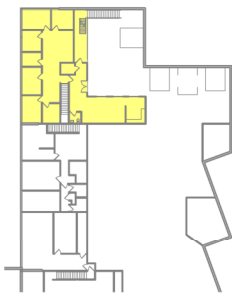
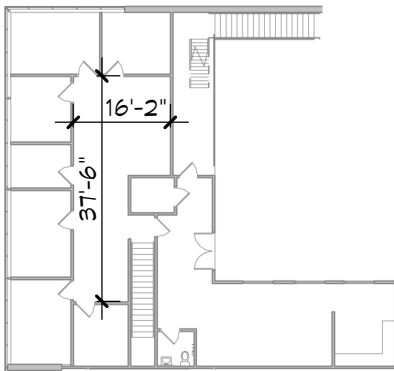


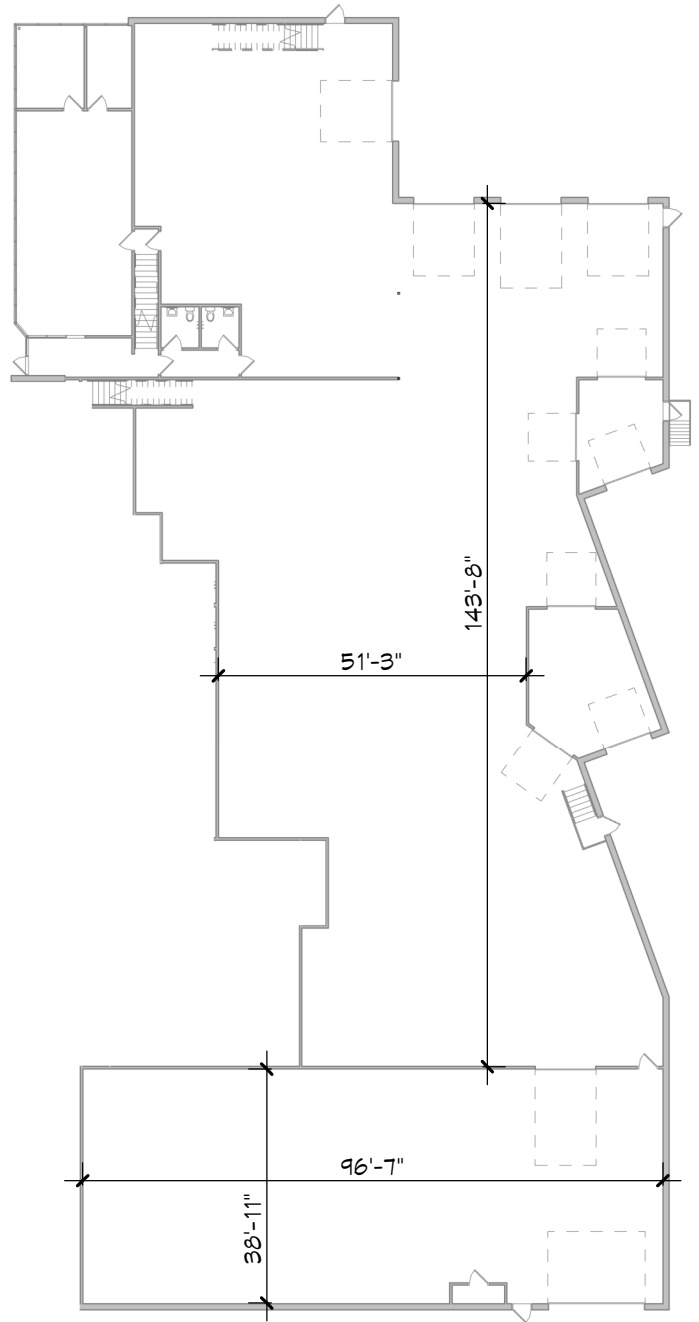
**3** **KEY PLAN**  
 9051 1" = 100'-0"



**4** **KEY PLAN**  
 9051 1" = 100'-0"



**2** **UPPER LEVEL** 2,440 R.S.F.  
 9051 1/32" = 1'-0"



**1** **SUITE 9051 PLAN** 16,908 R.S.F.  
 9051 1/32" = 1'-0"

SHEET:  
 9051

PROJECT #: 191129  
 DATE: 05/03/19

**LYNDALE BUSINESS CENTER**  
 9051 LYNDALE BLVD.  
 BLOOMINGTON, MN

**KENDALL**  
**COMMERCIAL**  
 Tel: 952.884.4888 Fax: 952.881.4885

9300 Hennepin Town Road  
 Minneapolis, MN 55347  
 Tel: 952.278.8880

**HTG**  
 architects  
 www.htg-architects.com