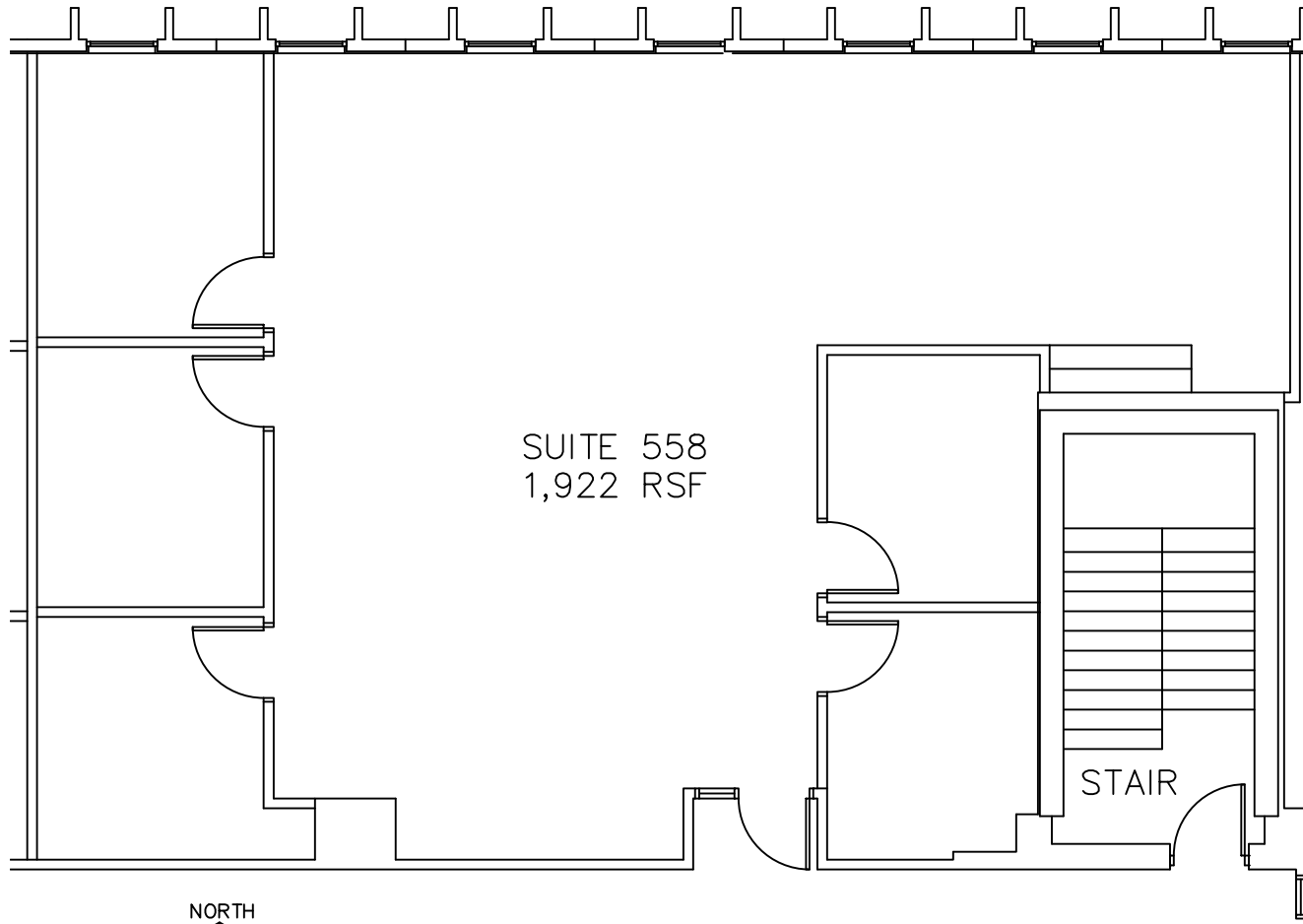


KEY PLAN - 8120 BLDG

NTS



SUITE 558
1,922 RSF

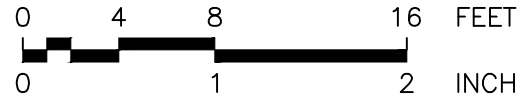
STAIR



FLOOR PLAN

1/8" = 1'-0"

04-10-19



SUITE 558 - 1,922 RSF

Southtown Office Park
8120 Penn Ave. South
BLOOMINGTON, MINNESOTA

**RDQ
DESIGN**

(612) 242-3257
randy.quinn@rdqdesign.com
www.rdqdesign.com

**KENDALL
COMMERCIAL**

(952) 884-4888 OFFICE
(952) 884-4885 FAX