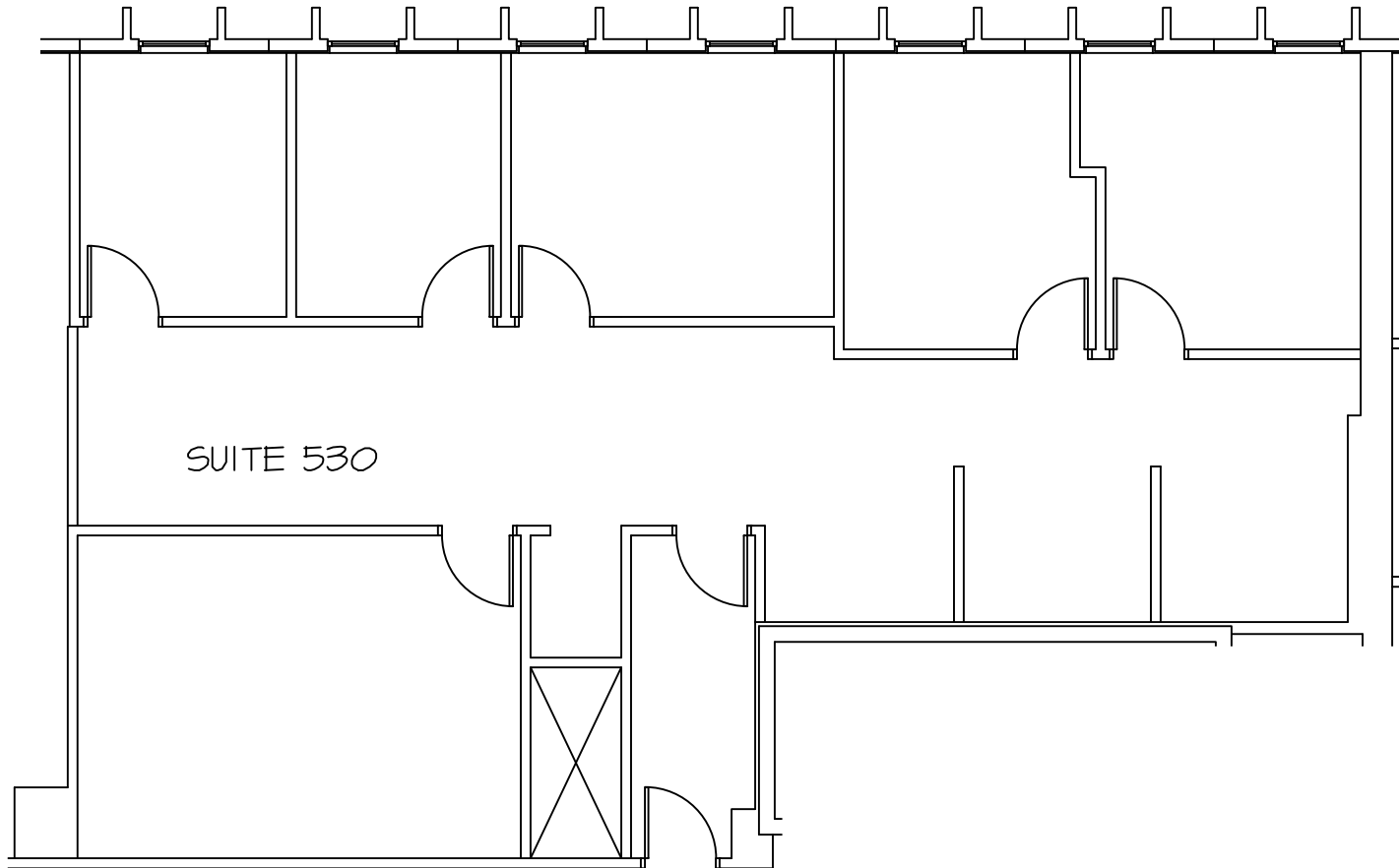


KEY PLAN - 8120 BLDG

NTS



SUITE 530



FLOOR PLAN

1/8"=1'-0"



RDQ
 DESIGN GROUP
 (612) 242-8877
 www.rdqdesign.com
 randy@rdqdesign.com

REVISIONS:

Copyright Notification
 These drawings, design and concept are the property of RDQ Design and shall not be copied, distributed or used in conjunction with any other work without the written permission of RDQ Design. Your contact with the author shall constitute evidence of these restrictions.

1,856 RSF

Suite 530

First Floor Plan
 Southtown Office Park
 8120 Penn Ave. South
 BLOOMINGTON, MINNESOTA

PROJECT

DRAWN RDQ

DATE 03-03-20

530