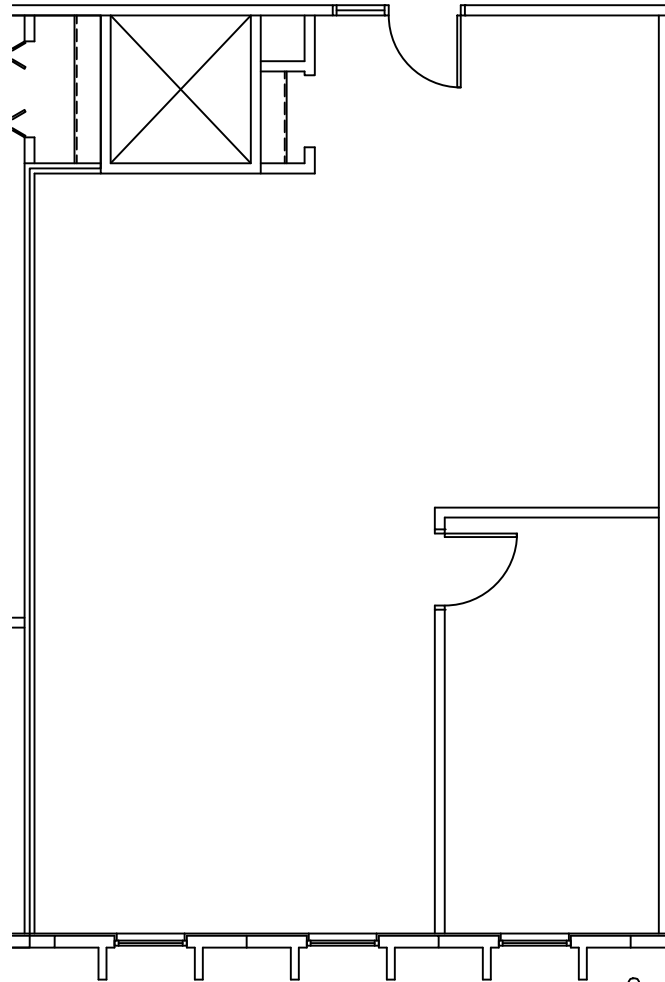
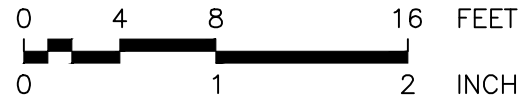


KEY PLAN - 8120 BLDG  
NTS



1 FLOOR PLAN  
1/8"=1'-0"



**RDC**  
DESIGN GROUP  
(612) 246-2277  
www.rdcdesign.com  
ready.q@rdcdesign.com

REVISIONS:

**KENDALL**  
**COMMERCIAL**  
(862) 864-4888 OFFICE  
(862) 864-4886 FAX

SUITE 425 FLOOR PLAN - 1,103 RSF  
Second Floor  
Southtown Office Park  
8120 Penn Ave, South  
BLOOMINGTON, MINNESOTA

PROJECT  
DRAWN RDC  
DATE 04-02-18

**A1**