

# FOR SALE - 13,858/SF OFFICE/WAREHOUSE SPACE

## 8500-8506 Pillsbury Ave. S.

8500-8506 Pillsbury Ave. S., Bloomington, MN 55420



## PROPERTY HIGHLIGHTS

- Two building complex available in prime Bloomington location
- Sale includes both office and warehouse space
- Zoned as heavy industrial property
- Building includes multiple dock doors and drive-in door
- Creative office space that is move-in ready
- Sale includes current tenants with income

FOR MORE  
INFORMATION CONTACT:

Main Office  
952-884-4888  
[info@kendallcommercial.com](mailto:info@kendallcommercial.com)

Tom Kendall  
952.220.4756  
[tkendall@kendallcommercial.com](mailto:tkendall@kendallcommercial.com)

Kari Kendall  
952.220.5024  
[kkendall@kendallcommercial.com](mailto:kkendall@kendallcommercial.com)

[www.kendallcommercial.com](http://www.kendallcommercial.com)

## COMMERCIAL REAL ESTATE

Sales | Leasing | Property Management | Development

**KENDALL**  
COMMERCIAL

This information contained herein was obtained from sources considered to be reliable. We cannot be responsible, however, for errors, omissions, prior sales, withdrawal from the market or change in price. Seller and broker make no representation as to the environmental condition of the property and recommend purchaser's independent due diligence.

8500-8506 Pillsbury Ave. S.



### Building Information

<b>Building Square Feet:</b>	13,858/SF
<b>Sale Price:</b>	\$549,000
<b>Price per Square Foot:</b>	\$43.22/SF
<b>Office:</b>	2,251/SF
<b>Warehouse:</b>	11,607/SF
<b>Land Area:</b>	.62 Acres
<b>Year Built:</b>	1953
<b>Zoning:</b>	I-3 General Industry
<b>Drive-In Doors:</b>	2
<b>Clear Height:</b>	14'



COMMERCIAL REAL ESTATE

Sales | Leasing | Property Management | Development

**KENDALL**  
COMMERCIAL

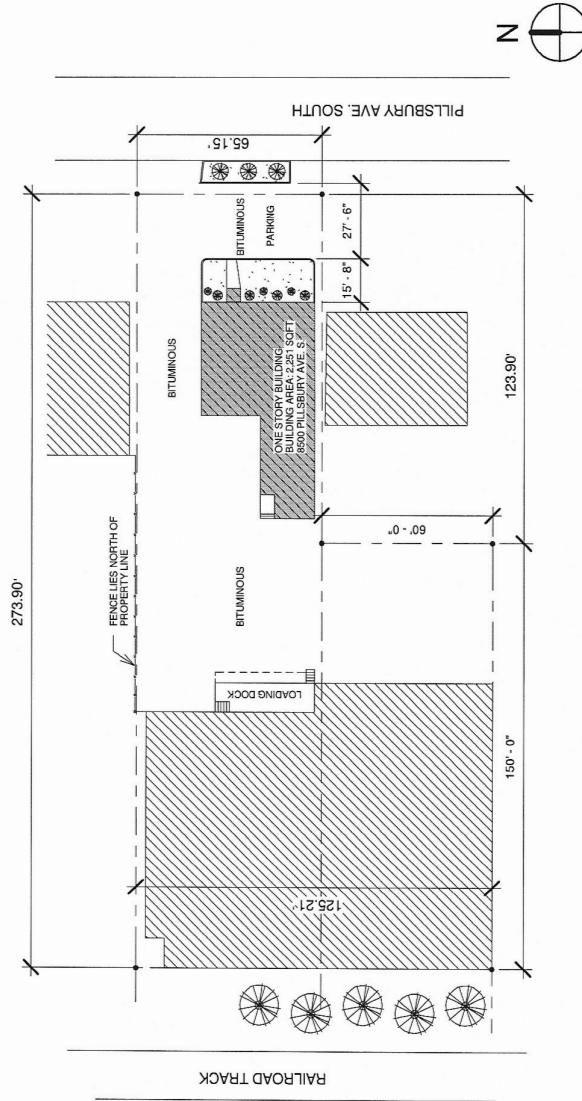
This information contained herein was obtained from sources considered to be reliable. We cannot be responsible, however, for errors, omissions, prior sales, withdrawal from the market or change in price. Seller and broker make no representation as to the environmental condition of the property and recommend purchaser's independent due diligence.



8500-8506 Pillsbury Ave. S.

# ONE STORY BUILDING

8500 PILLSBURY AVENUE SOUTH  
MINNEAPOLIS, MN 55420



1 Site Plan  
1" = 40'-0"

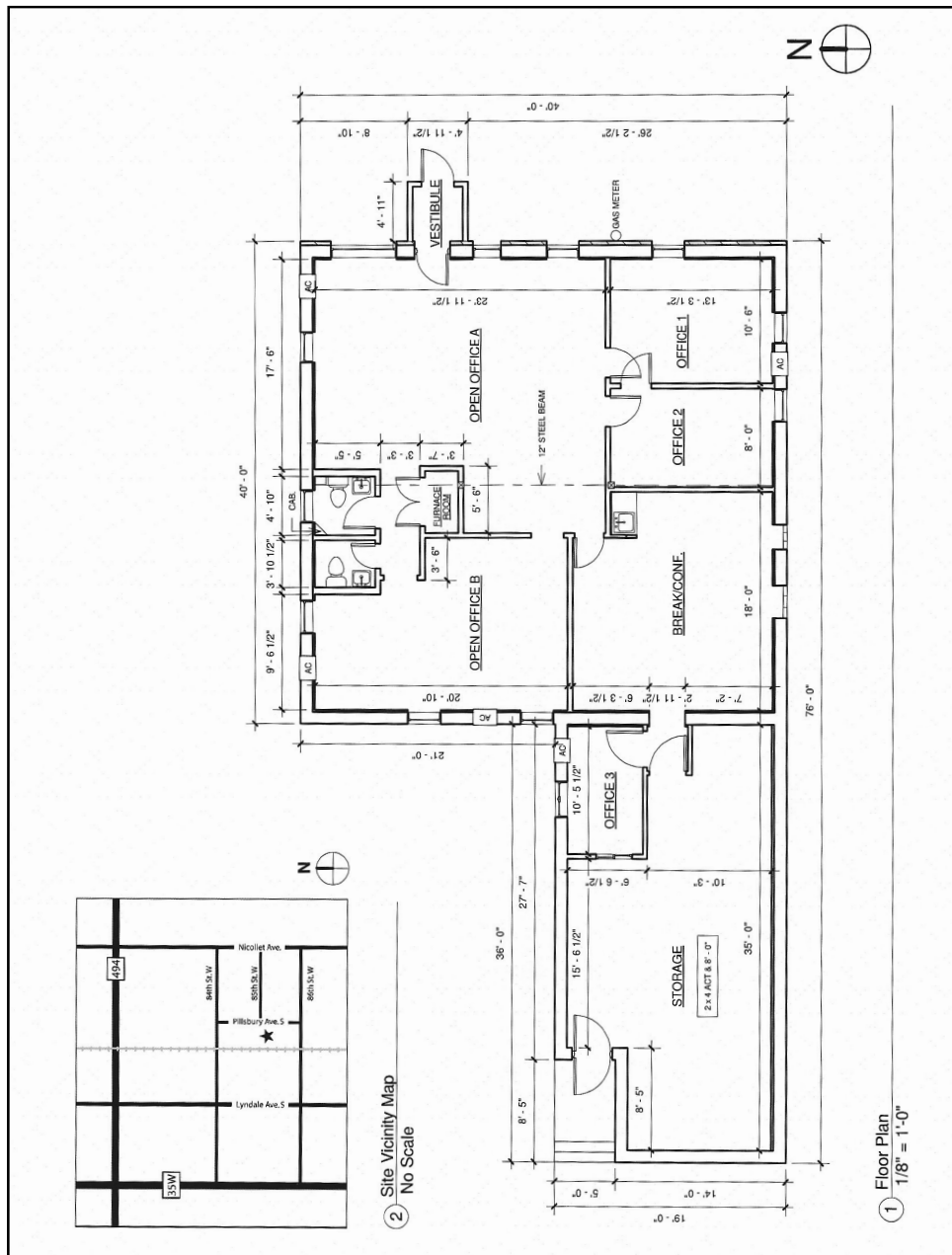
COMMERCIAL REAL ESTATE

Sales | Leasing | Property Management | Development

**KENDALL**  
COMMERCIAL

This information contained herein was obtained from sources considered to be reliable. We cannot be responsible, however, for errors, omissions, prior sales, withdrawal from the market or change in price. Seller and broker make no representation as to the environmental condition of the property and recommend purchaser's independent due diligence.

8500-8506 Pillsbury Ave. S.



## COMMERCIAL REAL ESTATE

Sales | Leasing | Property Management | Development

**KENDALL**  
COMMERCIAL

This information contained herein was obtained from sources considered to be reliable. We cannot be responsible, however, for errors, omissions, prior sales, withdrawal from the market or change in price. Seller and broker make no representation as to the environmental condition of the property and recommend purchaser's independent due diligence.