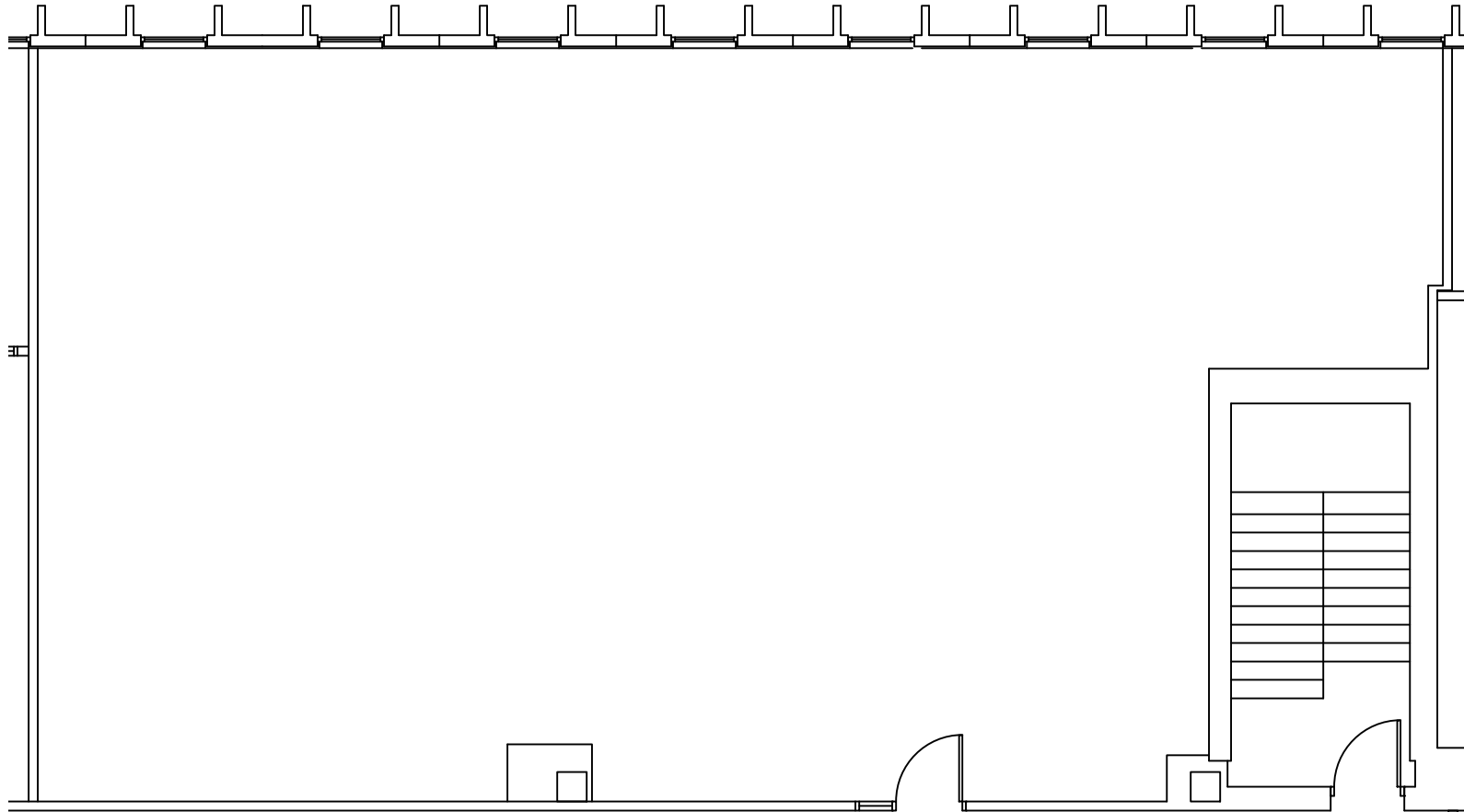
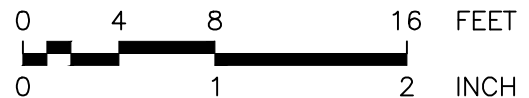



KEY PLAN - 8120 BLDG
NTS




FLOOR PLAN
1/8" = 1'-0"





RDG
DESIGN GROUP
(612) 946-3297
www.rdgdesign.com
ready.q@rdgdesign.com

REVISIONS:



KENDALL
COMMERCIAL
(662) 864-4888 OFFICE
(662) 864-4886 FAX

SUITE 260 FLOOR PLAN - 2,318 RSF

Second Floor
Southtown Office Park
8120 Penn Ave. South
BLOOMINGTON, MINNESOTA

PROJECT
DRAWN RDG
DATE 04-02-18

A1