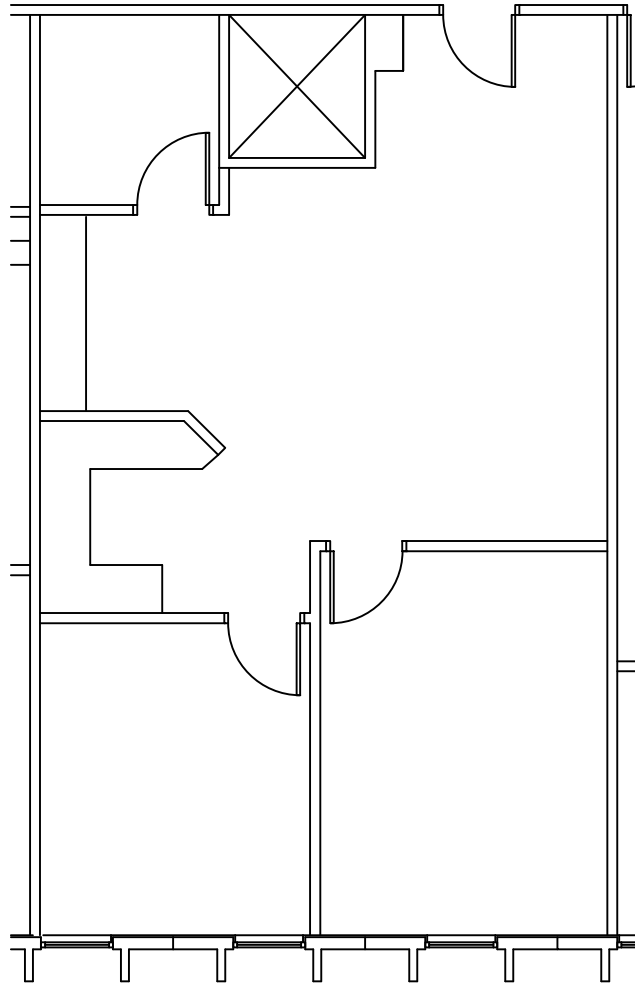



KEY PLAN - 8120 BLDG  
NTS




1 FLOOR PLAN  
1/8" - 1'-0"





RDG  
DESIGN GROUP  
(612) 946-3297  
www.rdgdesign.com  
ready.q@rdgdesign.com

REVISIONS:



KENDALL  
COMMERCIAL  
(952) 864-4888 OFFICE  
(952) 864-4886 FAX

SUITE 259 FLOOR PLAN - 1,026 RSF

Second Floor  
Southtown Office Park  
8120 Penn Ave. South  
BLOOMINGTON, MINNESOTA

PROJECT	
DRAWN	RDG
DATE	04-02-18

A1