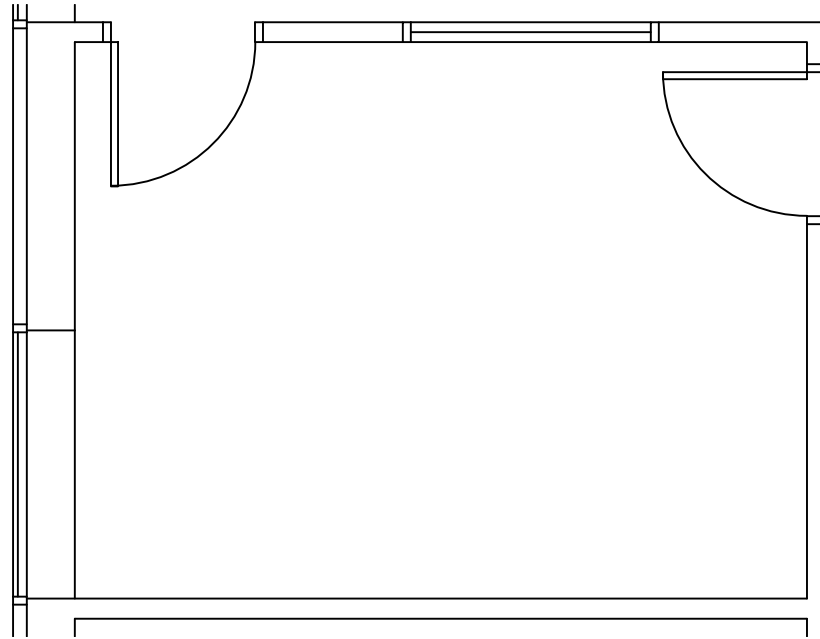
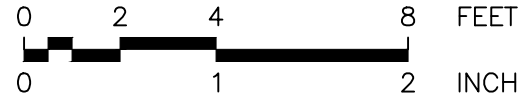



KEY PLAN
NTS




FLOOR PLAN
1
1/4"=1'-0"





RDG
DESIGN GROUP
(612) 946-8887
www.rdgdesign.com
ready@rdgdesign.com

REVISIONS:



KENDALL
COMMERCIAL
(612) 864-4888 OFFICE
(612) 864-4886 FAX

SUITE 150C FLOOR PLAN - 230 RSF

Second Floor
Southtown Office Park
8100 Penn Ave. South
BLOOMINGTON, MINNESOTA

PROJECT
DRAWN RDG
DATE 04-02-18

A1