

# FOR LEASE

## 7831 East Bush Lake Rd.

7831 East Bush Lake Rd., Bloomington, MN 55438



## PROPERTY HIGHLIGHTS

- Building signage available on prime site adjacent to East Bush Lake Road
- Exceptional visibility and access from 494 in ideal Bloomington location
- New state-of-the art training center and break room
- Very attractive leasing rates
- Professional on-site leasing and property management
- Heated and secure garage parking available

FOR MORE  
INFORMATION CONTACT:

Main Office  
952-884-4888

[info@kendallcommercial.com](mailto:info@kendallcommercial.com)

Tom Kendall  
952.220.4756

[tkendall@kendallcommercial.com](mailto:tkendall@kendallcommercial.com)

Kari Kendall  
952.220.5024

[kkendall@kendallcommercial.com](mailto:kkendall@kendallcommercial.com)

[www.kendallcommercial.com](http://www.kendallcommercial.com)

## COMMERCIAL REAL ESTATE

Sales | Leasing | Property Management | Development

**KENDALL**  
COMMERCIAL

This information contained herein was obtained from sources considered to be reliable. We cannot be responsible, however, for errors, omissions, prior sales, withdrawal from the market or change in price. Seller and broker make no representation as to the environmental condition of the property and recommend purchaser's independent due diligence.

# 7831 East Bush Lake Road



## Building Information

<b>Building Size:</b>	31,170/SF
<b>General Use:</b>	Office
<b>Year Built:</b>	1982
<b>Building Class:</b>	B
<b>Floors:</b>	3
<b>Parking Spaces:</b>	100

## Leasing Information

<b>Lease Rate:</b>	\$12.00/SF
<b>Lease Type:</b>	Net
<b>Estimated 2017 Operating Expenses and</b>	
<b>Property Tax:</b>	\$8.00/SF



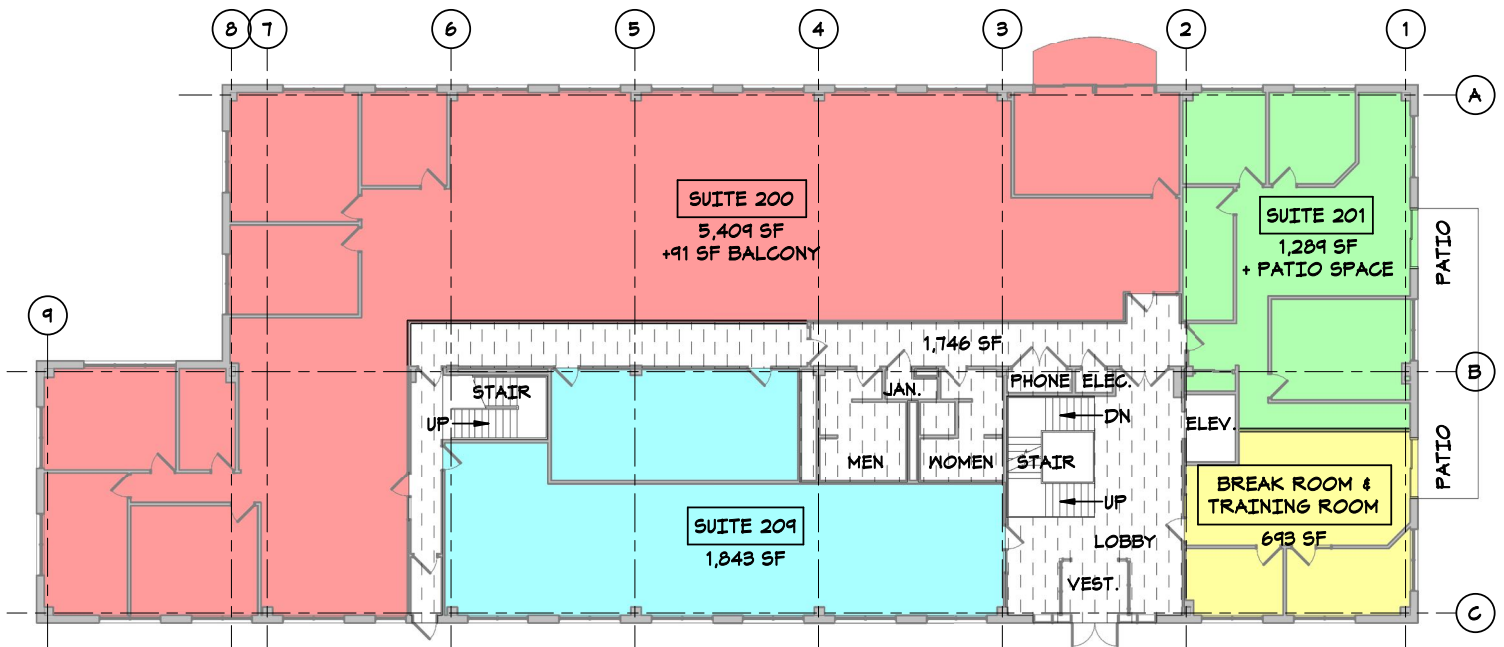
## COMMERCIAL REAL ESTATE

Sales | Leasing | Property Management | Development

**KENDALL**  
COMMERCIAL

This information contained herein was obtained from sources considered to be reliable. We cannot be responsible, however, for errors, omissions, prior sales, withdrawal from the market or change in price. Seller and broker make no representation as to the environmental condition of the property and recommend purchaser's independent due diligence.

# 7831 East Bush Lake Rd., Level Two



**1**  
**L2** **LEVEL TWO FLOOR PLAN**  
1" = 20'-0"

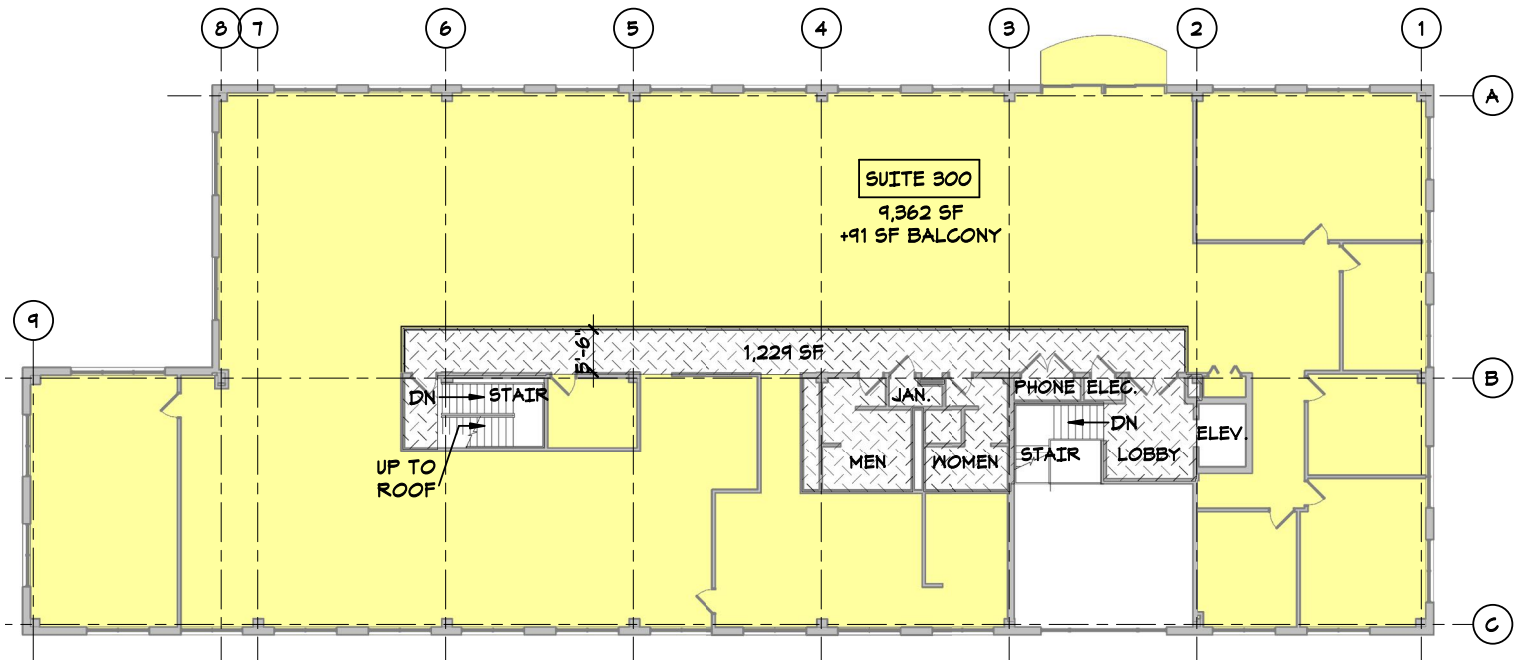
**COMMERCIAL REAL ESTATE**

Sales | Leasing | Property Management | Development

**KENDALL**  
**COMMERCIAL**

This information contained herein was obtained from sources considered to be reliable. We cannot be responsible, however, for errors, omissions, prior sales, withdrawal from the market or change in price. Seller and broker make no representation as to the environmental condition of the property and recommend purchaser's independent due diligence.

# 7831 East Bush Lake Rd., Level Three



1 LEVEL THREE FLOOR PLAN  
L3 1" = 20'-0"

COMMERCIAL REAL ESTATE

Sales | Leasing | Property Management | Development

**KENDALL**  
COMMERCIAL

This information contained herein was obtained from sources considered to be reliable. We cannot be responsible, however, for errors, omissions, prior sales, withdrawal from the market or change in price. Seller and broker make no representation as to the environmental condition of the property and recommend purchaser's independent due diligence.