

# FOR LEASE

## International Village

220 W. 98th St., Bloomington, MN 55420



## PROPERTY HIGHLIGHTS

- 6,150 square foot one story building in central Bloomington
- Retail or office availability
- Excellent commercial location with high visibility
- Conveniently located close to I-35W
- Abundant nearby dining and shopping options
- Responsive local property management

### Building Information

General Use: Office/Retail

Year Built: 1967

Building Class: C

### Leasing Information

Lease Rate: \$16.00 - \$18.00/SF

Lease Type: Gross

Operating Expenses and Property Tax Included

FOR MORE  
INFORMATION CONTACT:

Main Office

952-884-4888

[info@kendallcommercial.com](mailto:info@kendallcommercial.com)

Tom Kendall

952.220.4756

[tkendall@kendallcommercial.com](mailto:tkendall@kendallcommercial.com)

Kari Kendall

952.220.5024

[kkendall@kendallcommercial.com](mailto:kkendall@kendallcommercial.com)

[www.kendallcommercial.com](http://www.kendallcommercial.com)

## COMMERCIAL REAL ESTATE

Sales | Leasing | Property Management | Development

**KENDALL**  
**COMMERCIAL**

This information contained herein was obtained from sources considered to be reliable. We cannot be responsible, however, for errors, omissions, prior sales, withdrawal from the market or change in price. Seller and broker make no representation as to the environmental condition of the property and recommend purchaser's independent due diligence.

220 W. 98th St.



### Suite Information

- Suite Size: 1,296/SF
- Reception and Sitting Area
- 4 large individual offices with abundant natural light
- Largest office could be a conference room or open work space
- Break room with kitchenette
- High visibility signage available on front of building and on free standing sign
- Rent: \$1,750/month



## COMMERCIAL REAL ESTATE

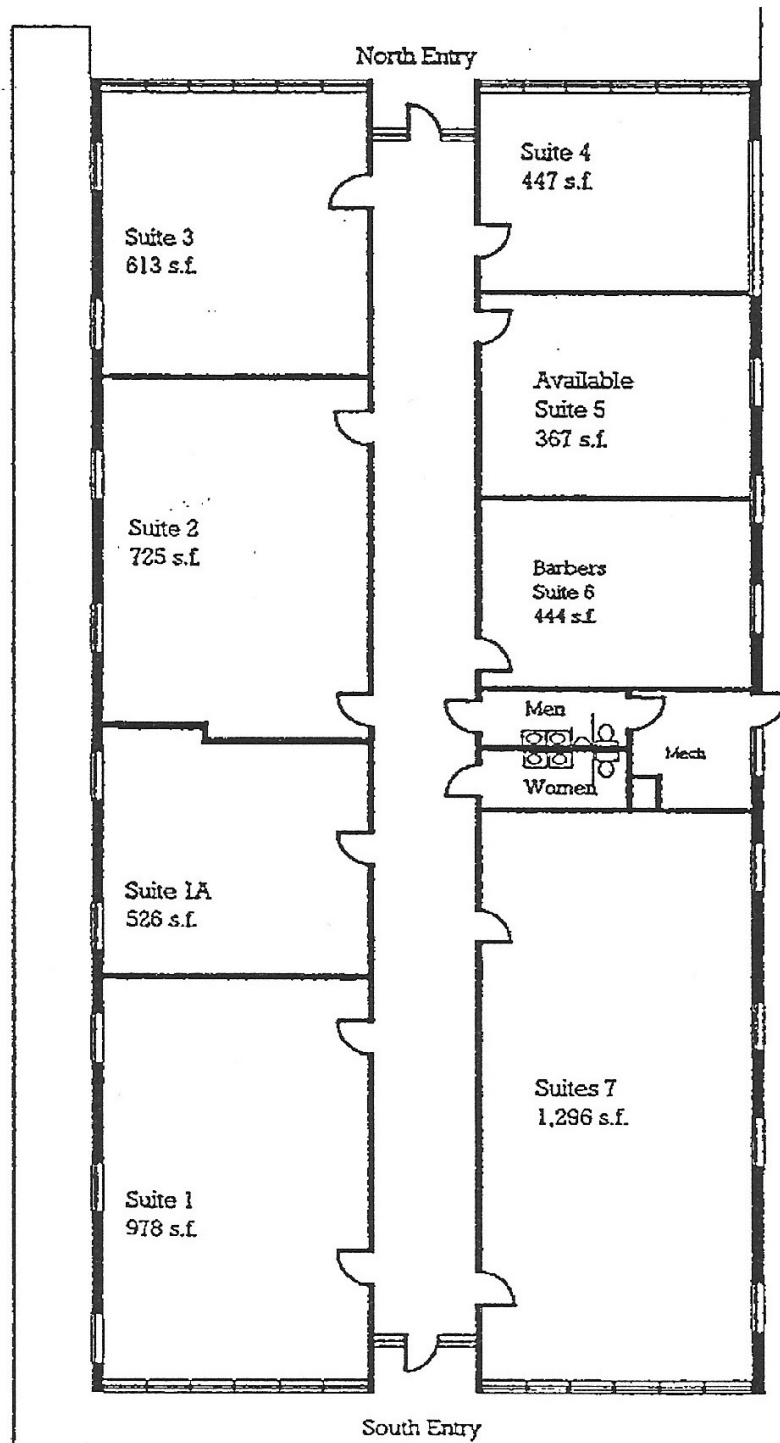
Sales | Leasing | Property Management | Development

**KENDALL**  
COMMERCIAL

This information contained herein was obtained from sources considered to be reliable. We cannot be responsible, however, for errors, omissions, prior sales, withdrawal from the market or change in price. Seller and broker make no representation as to the environmental condition of the property and recommend purchaser's independent due diligence.



# 220 W. 98th Street



## COMMERCIAL REAL ESTATE

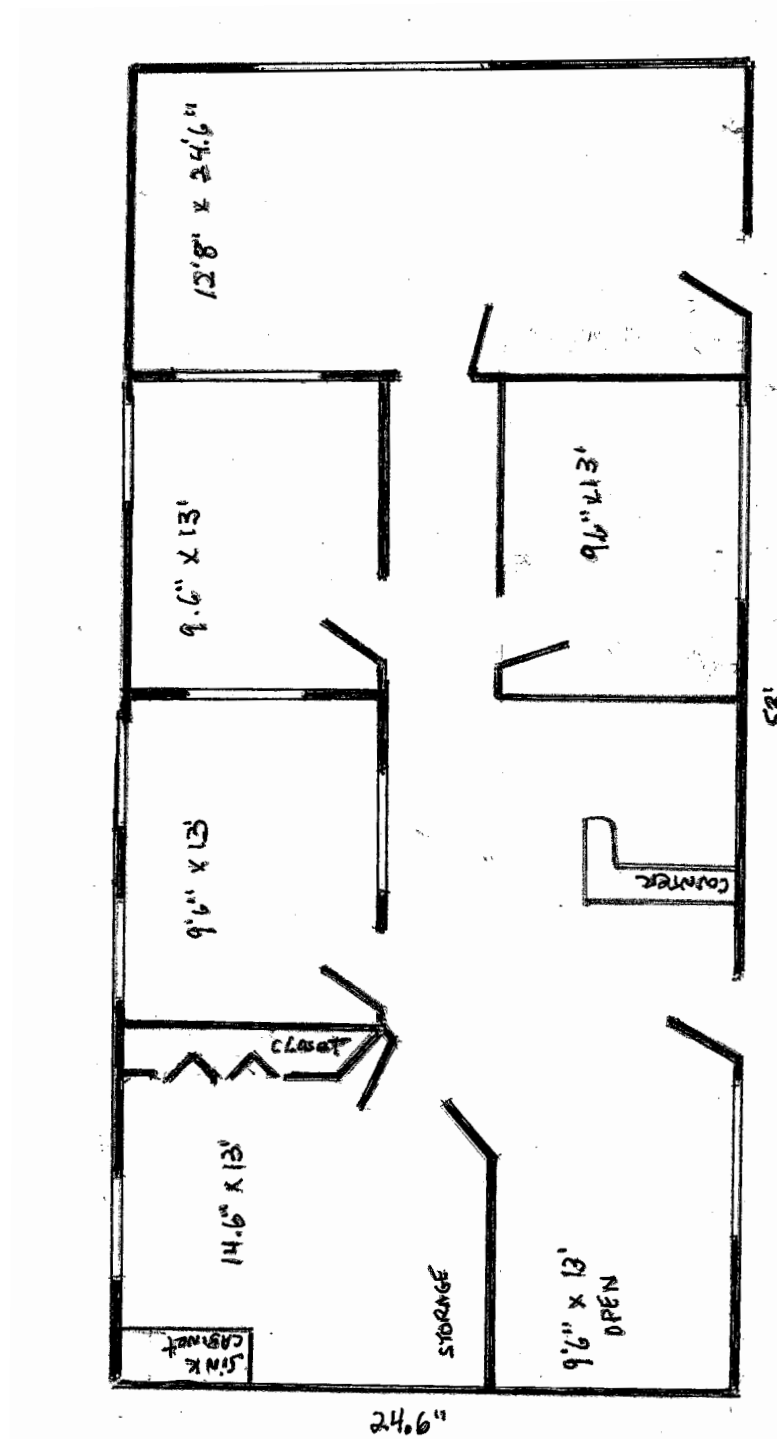
Sales | Leasing | Property Management | Development

**KENDALL**  
COMMERCIAL

This information contained herein was obtained from sources considered to be reliable. We cannot be responsible, however, for errors, omissions, prior sales, withdrawal from the market or change in price. Seller and broker make no representation as to the environmental condition of the property and recommend purchaser's independent due diligence.

220 W. 98th St.

Suite #7  
1,296/SF  
\$1,750/month + electric



## COMMERCIAL REAL ESTATE

Sales | Leasing | Property Management | Development

**KENDALL**  
COMMERCIAL

This information contained herein was obtained from sources considered to be reliable. We cannot be responsible, however, for errors, omissions, prior sales, withdrawal from the market or change in price. Seller and broker make no representation as to the environmental condition of the property and recommend purchaser's independent due diligence.